

Skill Level: BEGINNER These how-to's are suitable for people who are new to DIY and who have a basic knowledge of tools. If you've painted a room or re-potted a plant, you can probably complete one of these projects by yourself in a few hours or less.

✓ MATERIALS

- Graph Paper
- Pencil
- Tape Measure

If you have trouble finding things in your closet, or you constantly search for more space in your child's bedroom, you probably have a storage problem. The solution: closet organizers. Here's how to design closet organizers that will enhance your home's storage space.

Clean Your Closet.

- Move non-clothing items to other storage areas in the home.
- Move infrequently used items, such as seasonal clothing, to a different closet or store elsewhere in sealed, plastic bins.

Take Inventory.

- Count everything that's left including suits, coats, shirts, dresses, blouses, skirts, ties, belts, shoes, and luggage.



Determine Your Needs.

- List current needs.

TIP: The following typical clothing dimensions will help you plan your closet's storage efficiently.

Man's suit coat	1-1/4" wide x 38" long
Man's shirt	1" wide x 38" long
Man's pants:	
■ Straight hanger	44" long
■ Folded on hanger	27" long
Woman's dress	68" long
Woman's jacket	36" long
Woman's blouse	34" long
Woman's skirt	36" long
Folded clothing	10" wide x 12" deep
Shoes	9" x 12" per pair

- Consider your future storage needs.

Educate Yourself.

- Visit Lowe's to discover choices for closet organizers.
- Ask a Lowe's associate for assistance.
- Read manufacturer brochures available at Lowe's and online.

Select Kit or Custom Organizers.

- Custom units are purchased by the linear foot.
- Prepackaged kits are purchased by the wall area (5' x 8' is the most common).
- Add-ons (drawers, extra shelves, tie and belt racks, hampers, etc.) offer specialized storage as needed.

Select Wire or Laminate.

- Wire shelving is less expensive, easy to install, and can be cut to your closet measurements. A smooth powder coated finish protects surfaces and clothing from damage.

- For a typical 4' x 8' closet, you'll need at least these items:

- Horizontal Hang Tracks
- Vertical Standards and Brackets
- Shelves
- Closet Rods
- End Caps
- Fasteners and Hardware

TIP: Look for wire shelves with continuous sliding rods, which allow your hangers to move uninterrupted across the entire bar.

- Laminate shelving is sturdy, cost-effective, and attractive. Laminate kits include closet rods, drawers, and other accessories. The installation is slightly more advanced compared to wire systems.

- For a typical 4' x 8' closet, you'll need at least these items:

- Tower or Corner Units
- Shelves
- Closet Rods
- Drawers
- Fasteners and Hardware

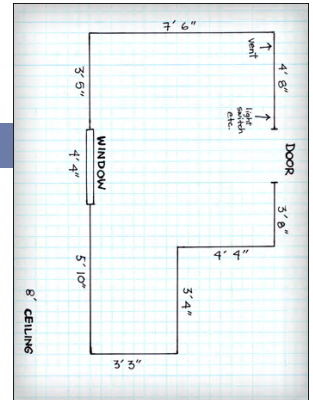


Sketch Your Closet.

- Use the storage planner at [Lowe's.com/Closetmaid](https://www.lowes.com/Closetmaid).
- Alternately, use graph paper and a pencil to design it yourself.
- Make accurate measurements of the closet including any alcoves.
- Sketch the height, width, and depth dimensions of the closet.

TIP: Most walls are not perfectly square, so measure the width of each wall at three different heights and use the smallest measurement.

- Note the location, size, and opening radius of all doors and windows in the closet.



Determine Space Requirements.

- Use your inventory of closet items (above) to calculate requirements.
- Lay out the actual items on the floor similar to the way you want them in your closet. Measure the space required by all closet items (above) and indicate them on your closet plan.

Plan Hanging Rods.

- Double hang rods (skirts, shirts, slacks, blouses) double your storage space. The top rod is typically placed near 80" and the bottom rod around 40" above the floor.
- Single hang rods (dresses, coats, robes) are commonly placed near 70" above the floor.
- In a child's closet, the top rod can be used to store out-of-season clothes. Alternately, install a rod that can be adjusted as the child grows or needs additional hanging space.

Plan Drawers.

- Plan drawers for storing socks, belts, purses, and items that don't hang or sit well on shelves. Drawer frames are available in different sizes to fit your closet system.

TIP: Allow adequate clearance for drawers to open, especially in closets with sliding doors.



Identify the Closet Wall Structure.

- The type of wall in your closet may require special hardware for anchoring shelving to the walls.
- Drywall may require wall anchors for support.
- Paneling may require wall anchors for support.
- Concrete/masonry requires a masonry bit to drill 1/4" x 1" holes plus #8 x 1" screws.
- Solid wood does not require anchors; use #8 x 1" screws.

Go shopping for closet organizer systems at Lowe's.

That's all there is to it. Now that you have your design and have selected the components, you're ready to install. Check out the installation videos and instruction sheets on installing a wire or laminate closet storage system at [Lowe's.com/Videos](https://www.lowes.com/Videos).

These "How-To's" are provided for informational purposes only. The information contained in Lowe's "How-To" videos is intended to provide general guidance to simplify jobs around the house. Because tools, products, materials, techniques, building codes and local regulations are continually changing, Lowe's assumes no responsibility for the accuracy of the information contained herein and disclaims any liability for omissions, errors or the outcome of any project. It is the responsibility of the viewer to ensure compliance with all applicable laws, rules, codes and regulations for a project. The viewer must always take proper safety precautions and exercise caution when taking on any project. If there is any question or doubt in regards to any element of a project, please consult with a licensed professional.