

Dream Kitchens

Designed by Lowe's and Frigidaire



Reverso en español



Counter Top – Corian-Fossil / Cabinets – Diamond Reflections Gresham Oak In Chocolate

Gourmet Dream Kitchen

This Dream Kitchen Package is for the person who wants it all. Maximum performance, professional quality, designer elegance, and classic detailing will invite your guests into your kitchen to watch you prepare a meal to remember.



Gourmet Dream Kitchen Options

Counter Depth Refrigerator



FLSC238DS - #134691



- **SpaceWise™ Design** - Offers the Same Shelf Size and Storage as a Standard Full-Size 26 Cu. Ft. Side-By-Side Refrigerator
- **PureSource 2™ Filtration** - The Purity of Bottled Water at a Fraction of the Price; Conveniently Located for Easy Replacement
- **Electronic Temperature Controls** - Upfront Digital Temperature Display for Precise Temperature Control
- **EasyCare™ Stainless Steel** - The Beauty of Real Stainless Steel with a Smudge Resistant Coating for Less Maintenance
- **In Door Can Rack** - Conveniently Holds Cans of Beverages
- **Door Ajar and Power Failure Alarms** - Notifies you if the Unit Reaches an Unsafe Temperature
- \$ _____

Built-In Dishwasher



FDB2810LDC - #73908



- **SpeedClean™** - Cleans and Dries a Full Load of Dirty Dishes in Under an Hour
- **Variable Speed Motor** - Adjusts Water Pressure, Based on Your Dishwashing Needs
- **NSF® Certified Sanitization** - Guaranteed to Kill 99.999% of Bacteria, Sterilizing Items Such as Baby Bottles and Cutting Boards
- **EasyCare™ Stainless Steel** - The Beauty of Real Stainless Steel with a Smudge Resistant Coating for Less Maintenance
- \$ _____

30" Electric Double Wall Oven



PLEB30T9DC - #107436

Also Available As A Single Oven:
PLEB30S9DC - #196770

- **EvenCook³™ Convection** - 3 Cooking Elements and a Fan that Give you Superior Baking and Roasting Performance in Both Ovens
- **Convection Convert** - Automatically Adjusts the Cooking Temperature Taking the Guesswork Out of Cooking
- **8.4 Cu. Ft. of Capacity** - 2 Independent Ovens Giving you Space to Bake and Roast Multiple Foods at the Same Time
- \$ _____

Gas Cooktop

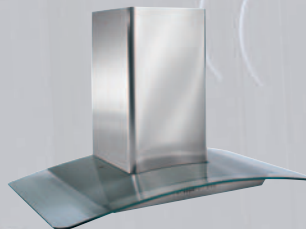


36" Gas
PLGC36S9EC - #228703
36" Electric
PLEC36S9EC - SOS Only

Also Available in:
30" Gas
PLGC30S9EC - #228702
30" Electric
PLEC30S9EC - SOS Only

- **Deep Drawn Design** - Recessed Cooktop Offers Superior Spill Protection for Easy Clean Up
- **14,000 BTU Power Burner** - 47% More Output than our Standard Burner for Faster Cooking and Boiling
- **Full-Width Matte Grates** - Heavy Duty Continuous Cooking Surface Allows Easy Maneuverability of Heavy Pots and Pans
- \$ _____

Ventilation System



PL36WC40EC - SOS Only

- **400 CFM Exhaust** - High Performance Exhaust System Rapidly Removes Smoke and Cooking Particles from your Kitchen
- **Professional Stainless Steel and Glass Construction** Offers Stylish Elegant Design
- \$ _____

Frigidaire